

LISOFLOOR 1000

Colored pigments for concrete floors



The green power
for your surface

LisoChem SRL

Rue de Le Mesnil, 34
5670 Viroinval
(Belgium)
Phone: +32 60 490 190
Mobile: +32 483 367 323
www.lisochem.com
info@lisochem.com

Manufacture & Office

Rue des Mousquetaires Gris
35 ZI de Mariembourg
5660 Belgium
Phone: +32 60 490 190
Mobile: + 32 483 367 323

CHARACTERISTICS

Microscopic pigments to penetrate concrete, UV-stable pigments, this floor color must be combined with our LisoFloor 900 hardener. Excellent surface waterproofing. Aqueous solution, with very low VOC emissions.

PRODUCT DESCRIPTION

LisoFloor 1000 is a new-generation pigment. Very easy to use.

This pigment mixed with our floor hardener, LisoFloor 900, will give you an increase in surface hardness of between 12 and 18%, good water resistance and a dust-free surface.

This easy-to-use, water-based solution complies with VOC standards worldwide.

LISOFLOOR 1000

Colored pigments for concrete floors

The Green Power for your surface

BENEFITS

Lisofloor 1000 :

- The latest generation of pigments
- Hardener and colorant which, once mixed, penetrate the concrete mass
- Abrasion-, UV- and dust-resistant.
- Good surface waterproofing.
- Water-based, solvent-free product with low VOC emissions.

USE

Fresh concrete, new or old

Factory hangars, storage, warehouses, distribution centers, food, textile, pharmaceutical, electronic and chemical plants, cold stores, bottling plants, aeronautical and automotive warehouses, etc

Buildings : Health centers and hospitals, offices, restaurant cafeterias, prisons, stores and shopping malls, schools, university stadiums, veterinary clinics, common areas, aisles and corridors, aseptic environments, kitchens, laboratories.

SECURITY

Please refer to the safety data sheet :

- Keep out of reach of children
- Protect from freezing
- Wear gloves and safety glasses
- Cover all metal and glass parts before application

LISO FLOOR 1000

Colored pigments for concrete floors

The Green Power for your surface

PREPARATION, APPLICATION

General notes :

Never apply in frost or rain. Always test on the substrate in an inconspicuous place. LisoFloor products must be thoroughly mixed before and during use.

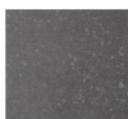
Preparation and application :

In 20L of LisoFloor 900, add 1 to 5% of LisoFloor 1000. Stir regularly before and during application. The range is composed of 6 colors, but it is possible to mix pigments to create your own color.

Suggested pigments :



WHITE



BLACK



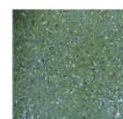
RED



YELLOW



BLUE



GREEN

PACKAGING

Pot 1 L